

HRC
HUBBELL, ROTH & CLARK, INC
 CONSULTING ENGINEERS SINCE 1915
 555 HULET DRIVE P.O. BOX 824
 BLOOMFIELD HILLS, MICH. 48303 - 0824
 PHONE: (248) 454-6300
 FAX (1st. Floor): (248) 454-6312
 FAX (2nd. Floor): (248) 454-6359
 WEB SITE: [http:// www.hrcengr.com](http://www.hrcengr.com)

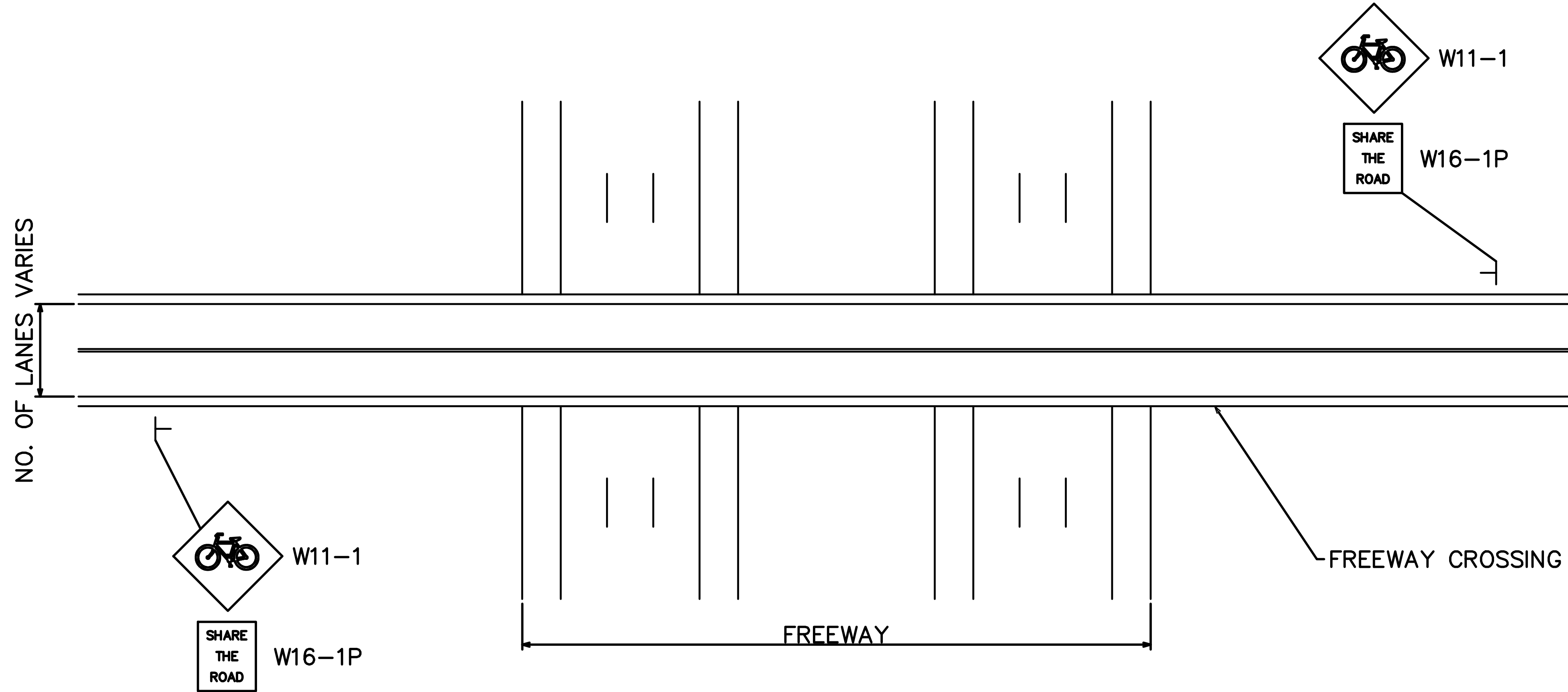


DATE	ADDITIONS AND/OR REVISIONS
DESIGNED	NBN
DRAWN	NBN
CHECKED	
APPROVED	

WASHTENAW AREA TRANSPORTATION STUDY
FREEWAY CROSSING
NON-MOTORIZED
RETROFIT

SHARED LANES
 ON
 CROSSING

HRC JOB NO. 20191021	SCALE NTS
DATE June 2020	SHEET NO. 2



HRC
HUBBELL, ROTH & CLARK, INC
 CONSULTING ENGINEERS SINCE 1915
 555 HULET DRIVE P.O. BOX 824
 BLOOMFIELD HILLS, MICH. 48303 - 0824
 PHONE: (248) 454-6300
 FAX (1st. Floor): (248) 454-6312
 FAX (2nd. Floor): (248) 454-6359
 WEB SITE: [http:// www.hrcengr.com](http://www.hrcengr.com)

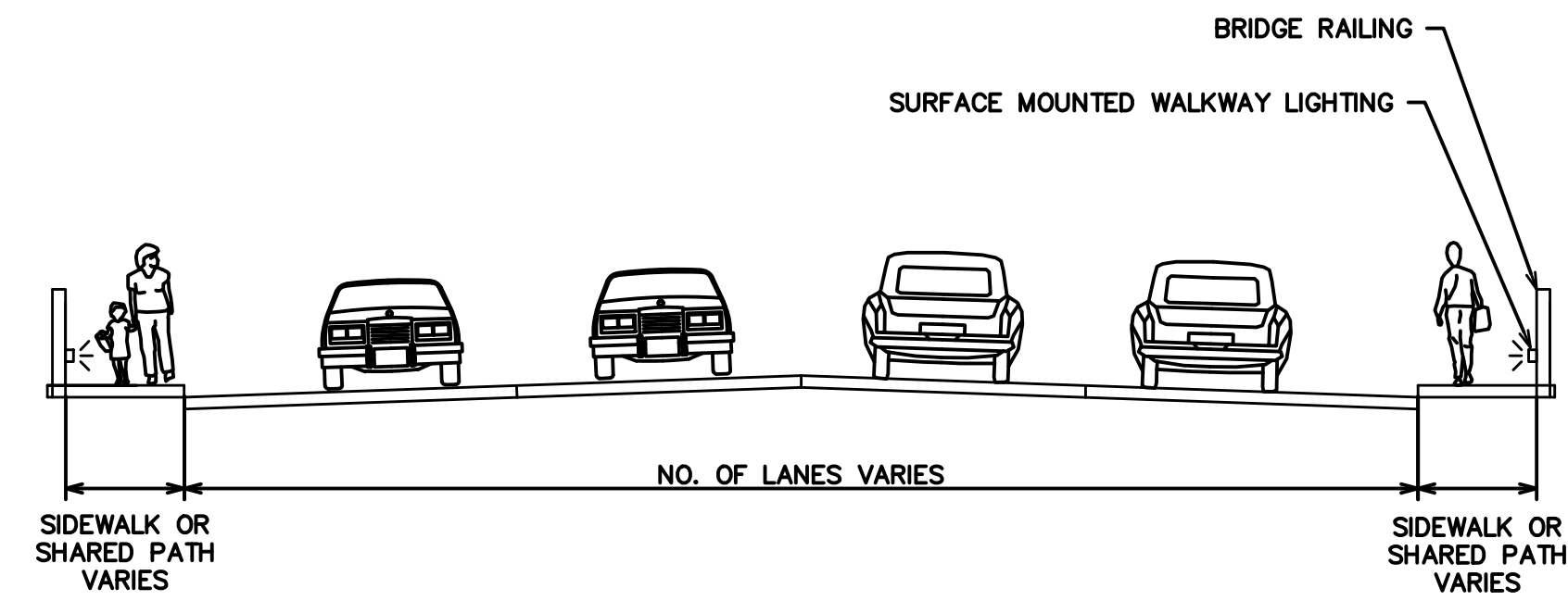


DATE	ADDITIONS AND/OR REVISIONS
DESIGNED	NBN
DRAWN	NBN
CHECKED	
APPROVED	

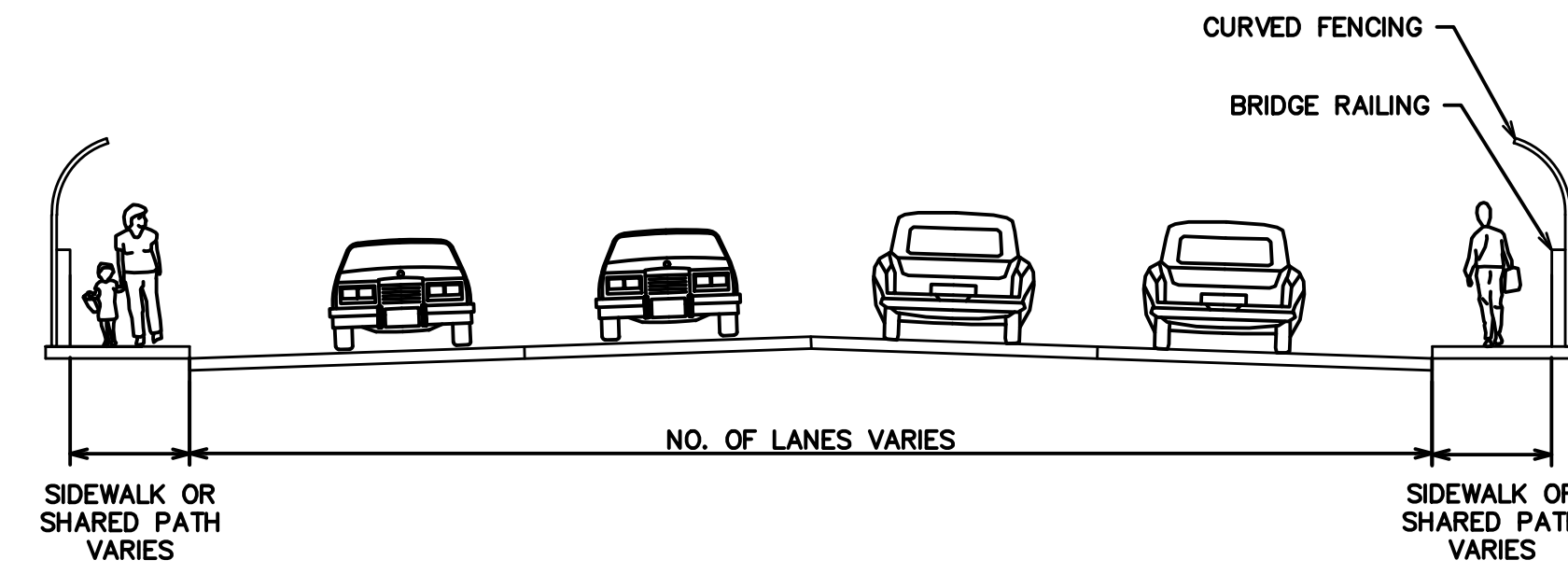
WASHTENAW AREA TRANSPORTATION STUDY
FREEWAY CROSSING
NON-MOTORIZED
RETROFIT

BICYCLE WARNING
 ON
 CROSSING

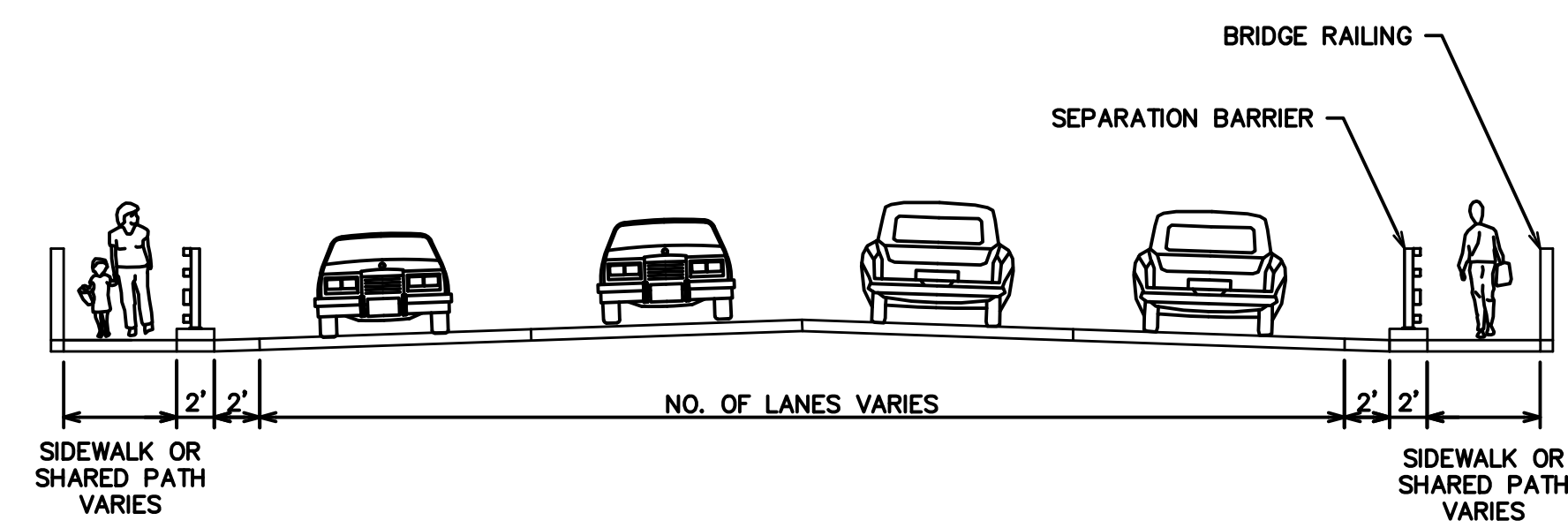
HRC JOB NO. 20191021	SCALE NTS
DATE June 2020	SHEET NO. 3



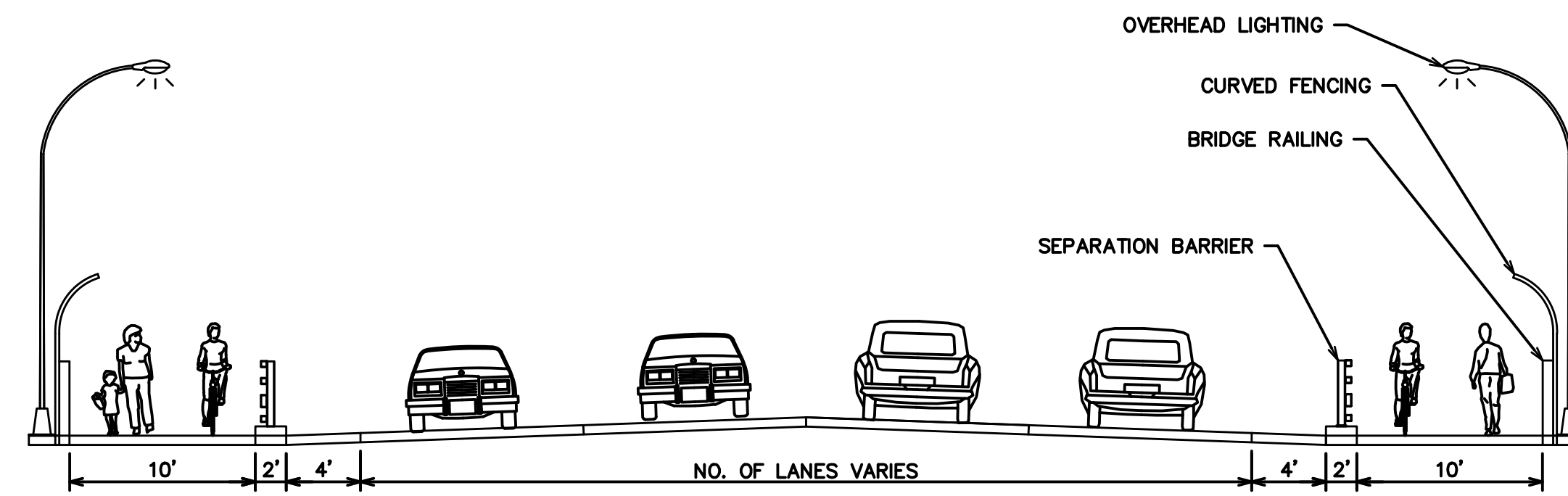
TYPICAL SECTION – SURFACE MOUNTED WALKWAY LIGHTING



TYPICAL SECTION – CURVED FENCING



TYPICAL SECTION – SEPARATION BARRIER



TYPICAL SECTION – SHARED PATH WITH SEPARATION BARRIER, CURVED FENCING, LIGHTING



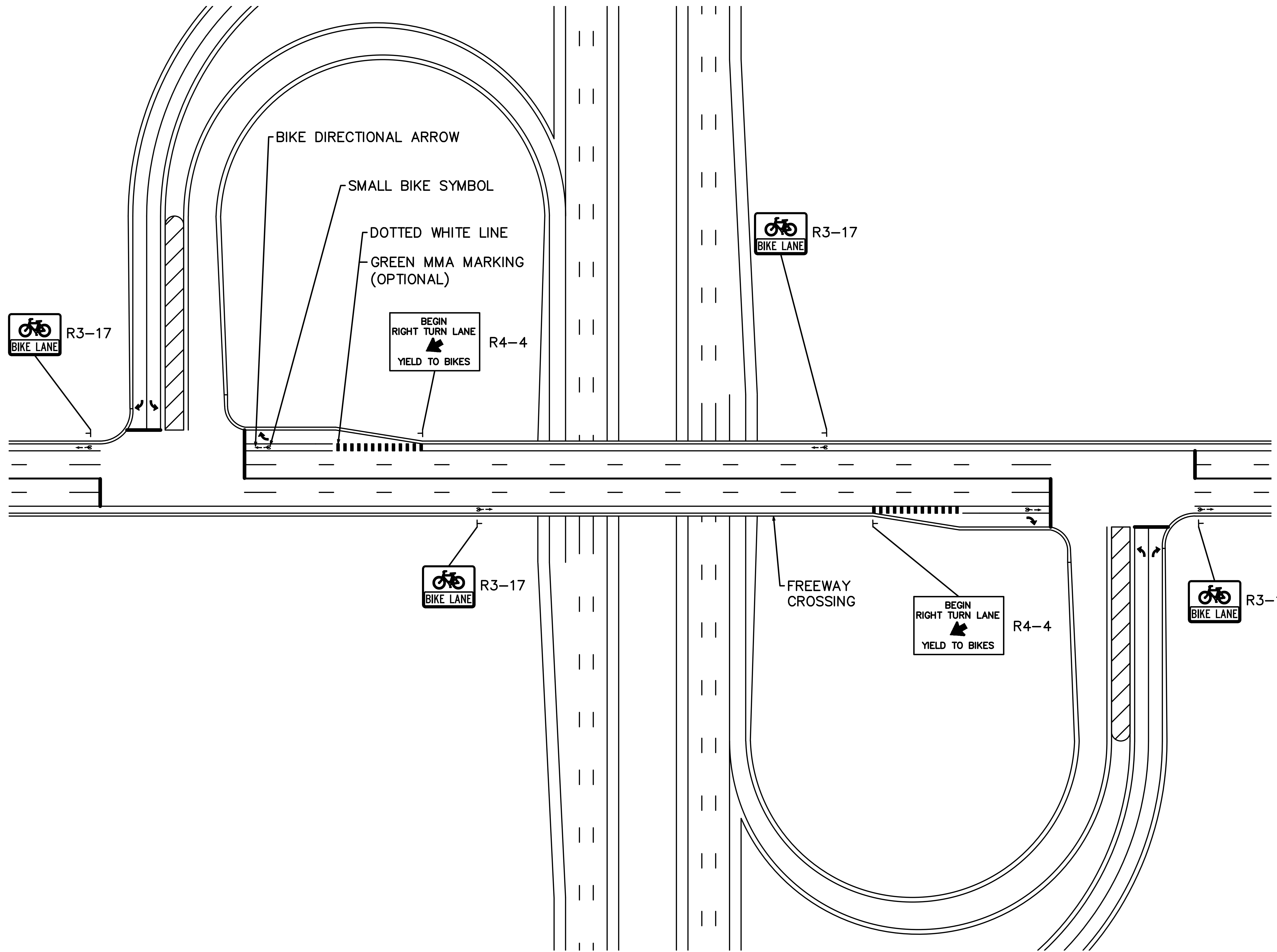
HRC
HUBBELL, ROTH & CLARK, INC
 CONSULTING ENGINEERS SINCE 1915
 555 HULET DRIVE P.O. BOX 824
 BLOOMFIELD HILLS, MICH. 48303 - 0824
 PHONE: (248) 454-6300
 FAX (1st Floor): (248) 454-6312
 FAX (2nd Floor): (248) 454-6359
 WEB SITE: [http:// www.hrcengr.com](http://www.hrcengr.com)

DATE	ADDITIONS AND/OR REVISIONS
DESIGNED	NBN
DRAWN	NBN
CHECKED	
APPROVED	

WASHTENAW AREA TRANSPORTATION STUDY
FREWAY CROSSING
NON-MOTORIZED
RETROFIT

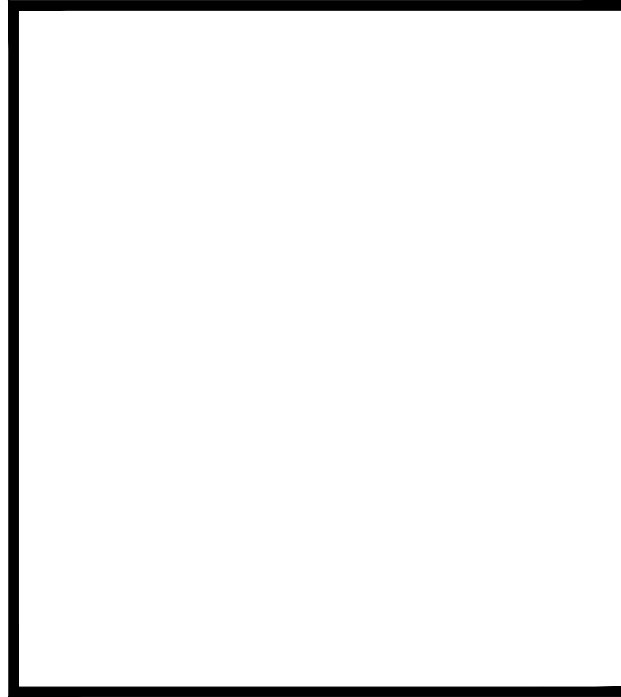
INTERMEDIATE
 AND LONG-TERM
 TREATMENTS

HRC JOB NO. 20191021	SCALE NTS
DATE June 2020	SHEET NO. 4



HRC
HUBBELL, ROTH & CLARK, INC
 CONSULTING ENGINEERS SINCE 1915
 555 HULET DRIVE P.O. BOX 824
 BLOOMFIELD HILLS, MICH. 48303 - 0824
 PHONE: (248) 454-6300
 FAX (1st. Floor): (248) 454-6312
 FAX (2nd. Floor): (248) 454-6359
 WEB SITE: [http:// www.hrcengr.com](http://www.hrcengr.com)

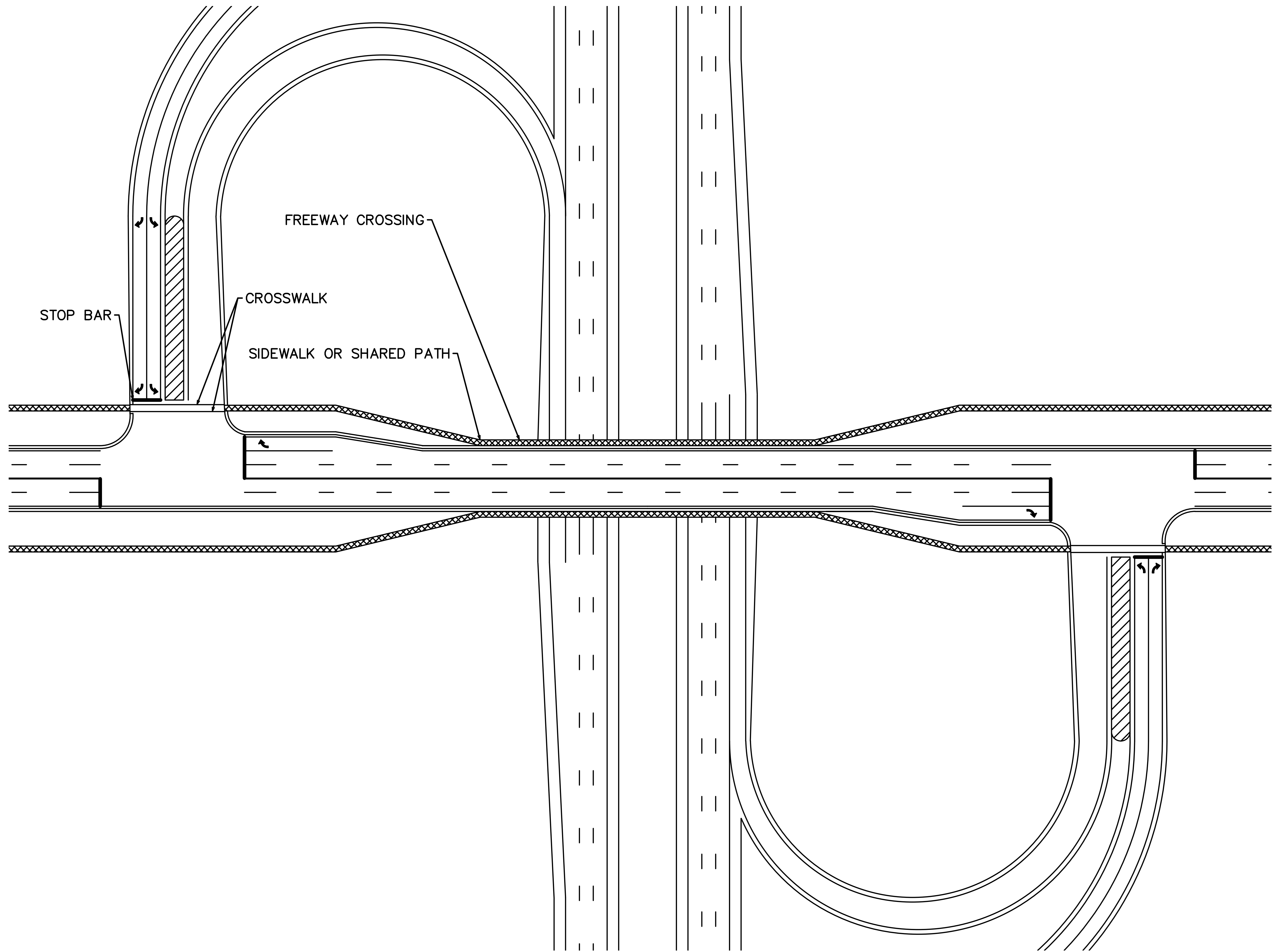
DATE	ADDITIONS AND/OR REVISIONS
DESIGNED	NBN
DRAWN	NBN
CHECKED	
APPROVED	



WASHTENAW AREA TRANSPORTATION STUDY
FREEWAY CROSSING
NON-MOTORIZED
RETROFIT

BIKE LANES
AT
FREEWAY RAMPS

HRC JOB NO. 20191021	SCALE NTS
DATE June 2020	SHEET NO. 5



HRC
HUBBELL, ROTH & CLARK, INC
 CONSULTING ENGINEERS SINCE 1915
 555 HULET DRIVE P.O. BOX 824
 BLOOMFIELD HILLS, MICH. 48303 - 0824
 PHONE: (248) 454-6300
 FAX (1st. Floor): (248) 454-6312
 FAX (2nd. Floor): (248) 454-6359
 WEB SITE: [http:// www.hrcengr.com](http://www.hrcengr.com)

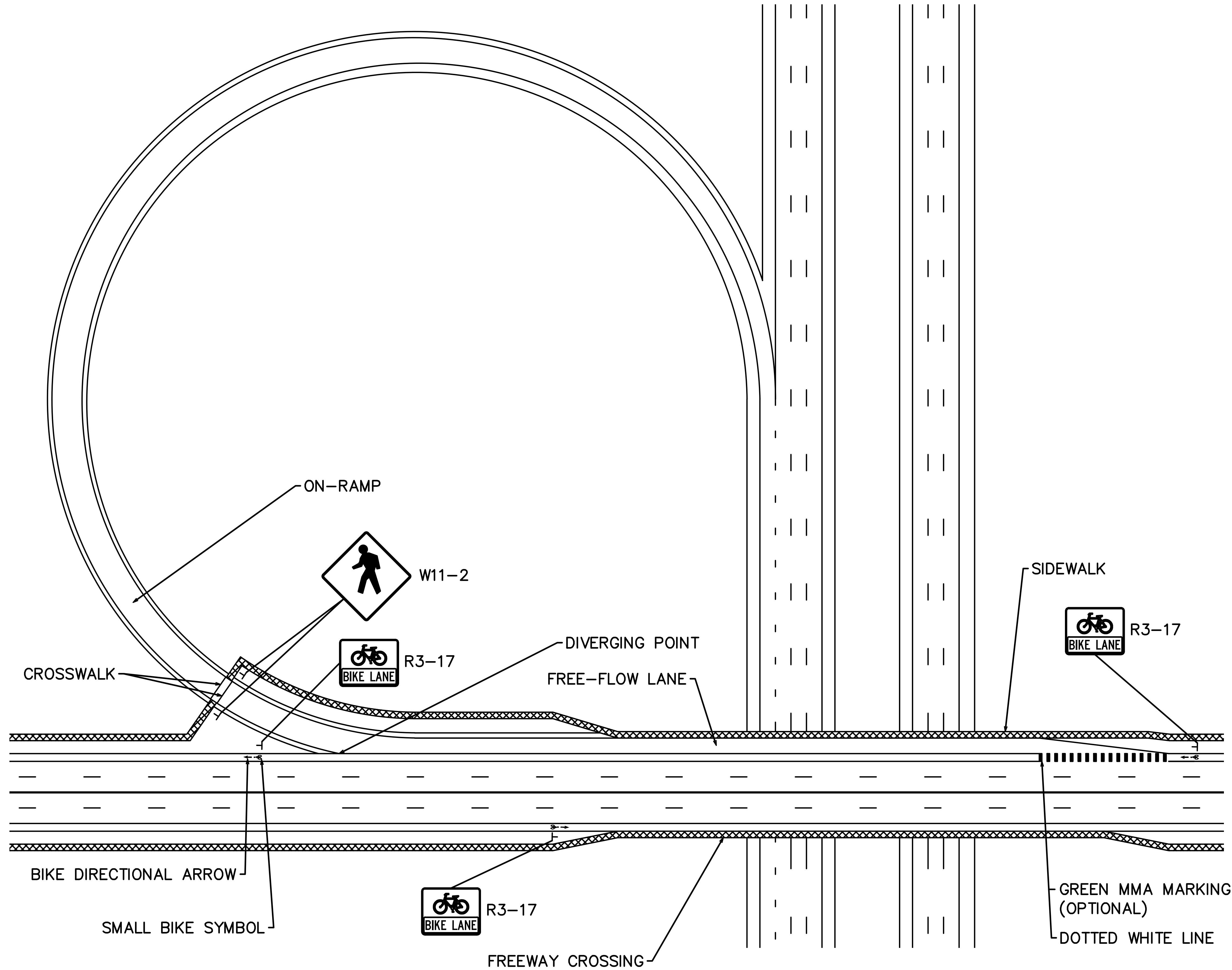


DATE	ADDITIONS AND/OR REVISIONS
DESIGNED	NBN
DRAWN	NBN
CHECKED	
APPROVED	

WASHTENAW AREA TRANSPORTATION STUDY
FREEWAY CROSSING
NON-MOTORIZED
RETROFIT

SIDEWALK OR SHARED PATH
 AT
 FREEWAY RAMPS

HRC JOB NO. 20191021	SCALE NTS
DATE June 2020	SHEET NO. 6



HRC
HUBBELL, ROTH & CLARK, INC
 CONSULTING ENGINEERS SINCE 1915
 555 HULET DRIVE P.O. BOX 824
 BLOOMFIELD HILLS, MICH. 48303 - 0824
 PHONE: (248) 454-6300
 FAX (1st Floor): (248) 454-6312
 FAX (2nd Floor): (248) 454-6359
 WEB SITE: [http:// www.hrcengr.com](http://www.hrcengr.com)



DATE	ADDITIONS AND/OR REVISIONS
DESIGNED	NBN
DRAWN	NBN
CHECKED	
APPROVED	

WASHTENAW AREA TRANSPORTATION STUDY
FREWAY CROSSING
NON-MOTORIZED
RETROFIT

BIKE LANE AND SIDEWALK
 AT
 FREE-FLOW ON-RAMP

HRC JOB NO. 20191021	SCALE NTS
DATE June 2020	SHEET NO. 8